



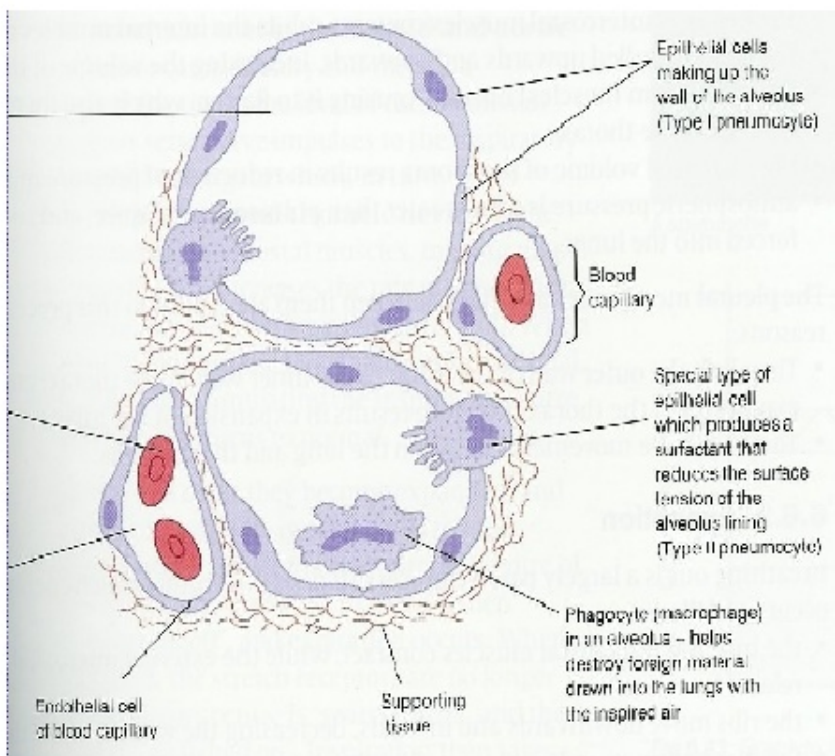
DOWNLOAD

[Nbme 17 Explanations](#)

There are 2 types of epithelium cell.

i. Type I Pneumocytes

ii. Type II Pneumocytes



Type I are relatively large, extremely flattened cells and make up most of the alveolar wall.

Type II pneumocytes secrete Surfactant, a mixture of lipids and proteins, which helps to prevent the alveolus from collapsing completely and 'sticking shut' as air moves out of the lungs during expiration.

The capillaries surrounding the alveoli are referred to as the Pulmonary capillaries

[Nbme 17 Explanations](#)



Nbme 17 AnswersNbme 17 Explanations PdfNbme 17 Answer ExplanationsThere's 3 alleles present - 1, 2, and 3.. The question asks what the child of a 1,3 x 2,2 pairing would be Thus, it'd have to be either 1,2, or 2,3 because they have to inherit one of the #2 alleles from momma.

About 80% through with UWorld (currently at 58%) and will be done by Friday (doing 120 questions/day).. NBME Answers and Explanations! What I was really looking for as an answer to this question was Type II pneumocytes ('stem cells' of the alveoli- can divide into more Type I and Type II pneumocytes; also make surfactant).. And will be making a pass through my missed after Ummm, I know the curve is harsh but how have I learned so much more and did so much worse?! My exam is on 7/6/18.. I just recently started dedicated and my school offered a free NBME 17 today Got my score at the end (270 out of 800, which equates to a 180) and was rightfully discouraged.. From there, we see that all males with the 1,3 genotype are affected - don't get distracted by the 1,3 female! Since the question is asking for an unaffected male, the answer can't be 1.

nbme explanations

nbme explanations, nbme explanations pdf, nbme explanations reddit, nbme explanations by amir, free 120 nbme explanations, surgery nbme explanations, where can i find nbme explanations, where to find nbme explanations, form 18 nbme explanations, nbme 15 explanations, nbme 18 explanations, nbme 20 explanations, nbme 16 explanations pdf, nbme 17 explanations, nbme 7 explanations

UWSA1: 202 on 6/3/18 UWSA2: 217 on 6/13/18 NBME 17: 198 (75% correct) on 6/25/18.. However, after going through all of the questions (and seeing all of my dumb mistakes), I realized that my percent correct was 73%, which, while not stellar, seems like it.. Nbme 17 Answers PdfNbme 17 Answers ExplanationsNbme 17 ExplanationsNbme 17 Answers Pdf.

nbme explanations reddit

free 120 nbme explanations

e10c415e6f